

Hampshire Water Transfer and Water Recycling Project

Environmental Statement – Appendix 9.9 Bivalve mollusc production area

VOLUME NUMBER: 6

PLANNING INSPECTORATE NUMBER: WA010002

APPLICATION DOCUMENT REFERENCE: 6.2

APFP REGULATION: 5(2)(a)

May 2026

Version 0



from
**Southern
Water.** 

The Southern Water logo graphic consists of three stylized, wavy blue lines of varying lengths, positioned to the right of the text 'Southern Water'.

Contents

- 1 Bivalve mollusc production area 1**
 - 1.1 Introduction 1
- 2 Langstone Harbour 2**
- 3 Portsmouth Harbour 5**
- 4 Southampton Water 10**
- References 15**

Graphics

- Graphic 2-1 Classified *Mercenaria mercenaria* production areas in Langstone Harbour 2
- Graphic 2-2 Classified *Crassostrea gigas* production areas in Langstone Harbour 3
- Graphic 2-3 Classified *O. edulis* production areas in Langstone Harbour 4
- Graphic 3-1 Classified *M. mercenaria* production areas in Portsmouth Harbour 5
- Graphic 3-2 Classified *Crassostrea gigas* production areas in Portsmouth Harbour 6
- Graphic 3-3 Classified *Cerastoderma edule* production areas in Portsmouth Harbour 7
- Graphic 3-4 Classified *O. edulis* production areas in Portsmouth Harbour 8
- Graphic 3-5 Classified *Tapes spp.* production areas in Portsmouth Harbour 9
- Graphic 4-1 Classified *O. edulis* production areas in Southampton Water 10
- Graphic 4-2 Classified *M. mercenaria* production areas in Southampton Water 11
- Graphic 4-3 Classified *Crassostrea gigas* production areas in Southampton Water 12
- Graphic 4-4 Classified *Cerastoderma edule* production areas in Southampton Water 13
- Graphic 4-5 Classified *Tapes spp.* production areas in Southampton Water 14

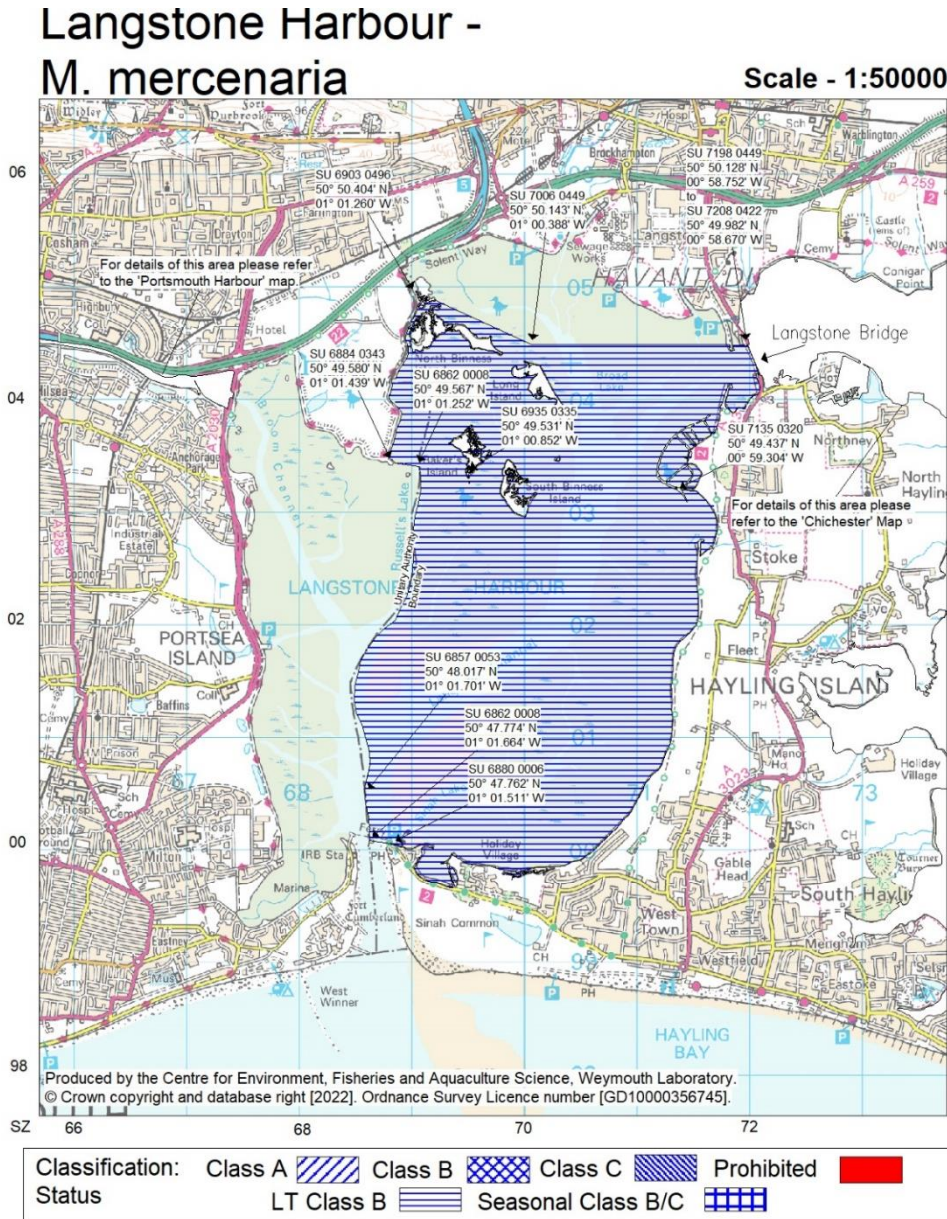
1 Bivalve mollusc production area

1.1 Introduction

- 1.1.1 This technical report has been prepared in relation to the Hampshire Water Transfer and Water Recycling Project (hereafter referred to as the ‘Proposed Development’). This technical report provides a series of graphics [1] that delineate the areas classified as bivalve mollusc production areas under Regulation (EU) 2019/627 covering Langstone Harbour (see section 2), Portsmouth Harbour (see section 3) and the Southampton Water (see section 4).
- 1.1.2 According to Food Standards Agency (FSA) shellfish classification [2], Chichester Harbour has been declassified from the current classification list and sampling plans (dated 19 January 2024) [3], therefore, no graphic of bivalve mollusc production area in Chichester Harbour could be provided.
- 1.1.3 The following species were identified as being target species of these areas:
1. European oyster *Ostrea edulis*
 2. Pacific oyster *Crassostrea gigas*
 3. Hard clam *Mercenaria* spp.
 4. Manila clam *Ruditapes philippinarum*
 5. Common cockle *Cerastoderma edule*

2 Langstone Harbour

Graphic 2-1 Classified *Mercenaria mercenaria* production areas in Langstone Harbour



Classification of Bivalve Mollusc Production Areas: Effective from 1 September 2022

The areas delineated above are those classified as bivalve mollusc production areas under Regulation (EU) 2019/627.

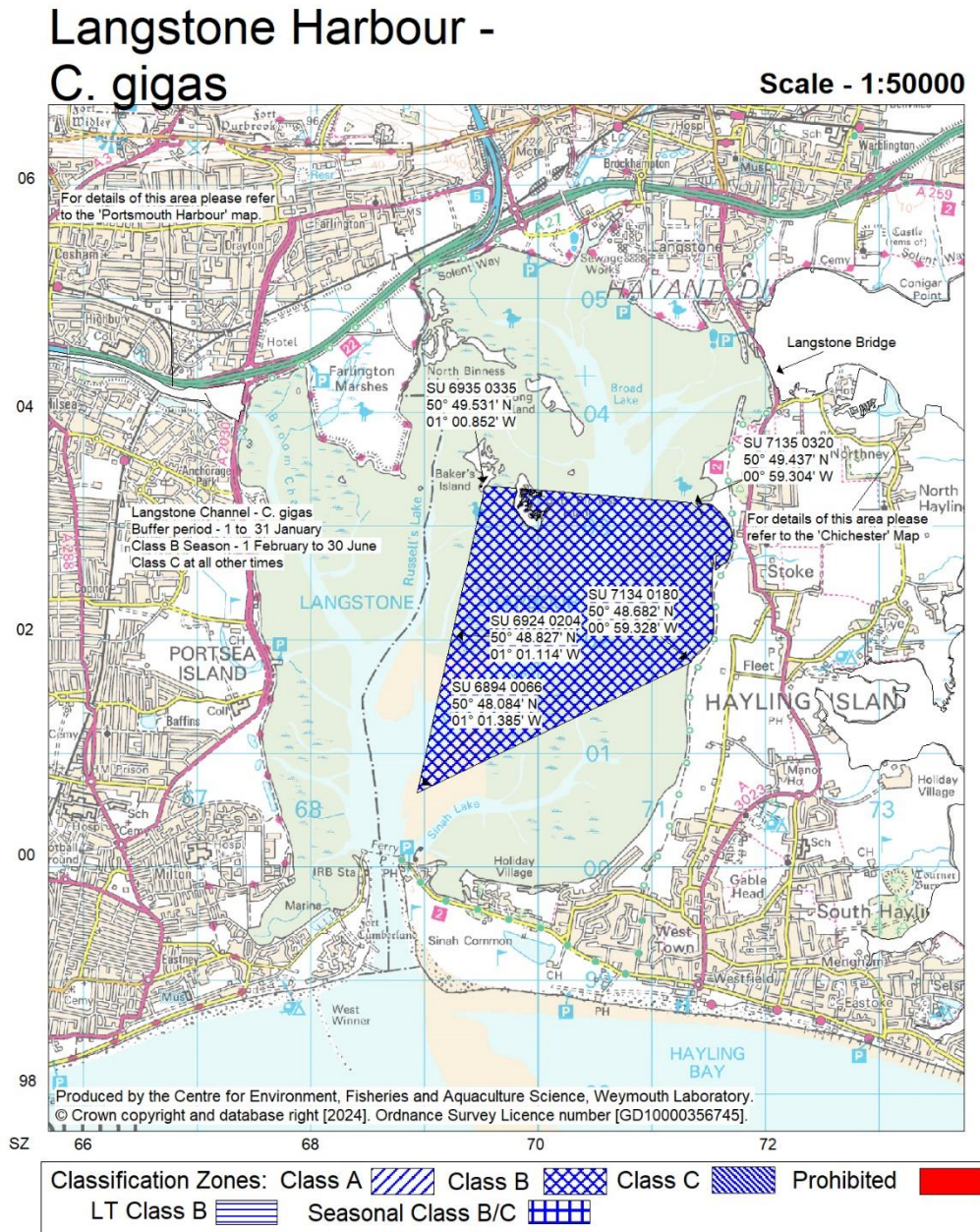
Further details on the classified species and the areas may be obtained from the responsible Food Authority. Enquiries regarding the maps should be directed to: Shellfish Microbiology, CEFAS Weymouth Laboratory, Barrack Road, The Nothe, Weymouth, Dorset DT4 8UB. (Tel: 01305 206600 Fax: 01305 206601)

N.B. Lat/Longs quoted are WGS84

Unless otherwise stated, non-straight line boundaries between co-ordinates follow the OS 1:25,000 mean high water line.

Food Authority: Portsmouth Port Health Authority

Graphic 2-2 Classified *Crassostrea gigas* production areas in Langstone Harbour



Classification of Bivalve Mollusc Production Areas: Effective from 1 February 2024

The areas delineated above are those classified as bivalve mollusc production areas under Regulation (EU) 2019/627.

Further details on the classified species and the areas may be obtained from the responsible Food Authority. Enquiries regarding the maps should be directed to: Shellfish Microbiology, CEFAS Weymouth Laboratory, Barrack Road, The Nothe, Weymouth, Dorset DT4 8UB. (Tel: 01305 206600 Fax: 01305 206601)

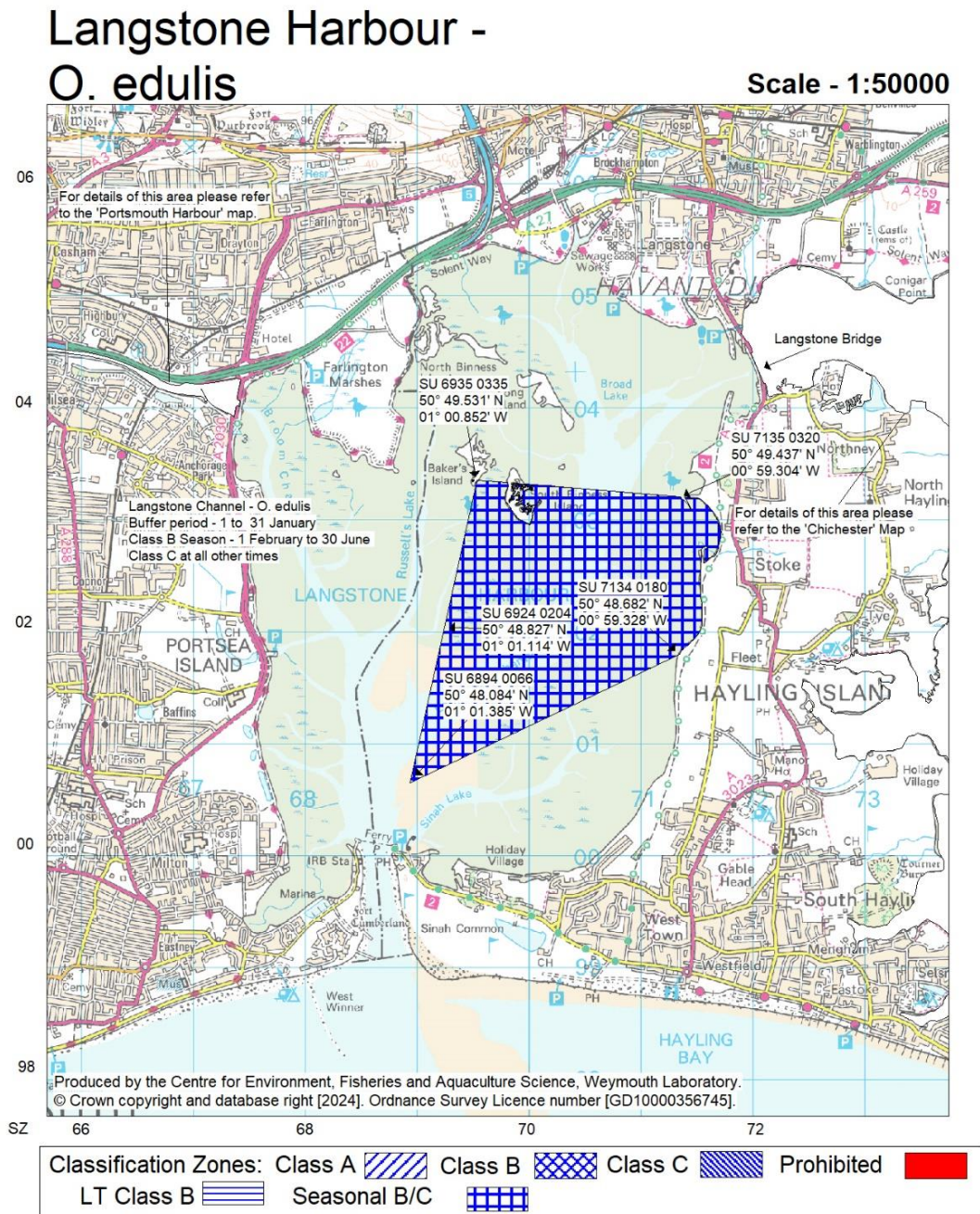
N.B. Lat/Longs quoted are WGS84

Unless otherwise stated, non-straight line boundaries between co-ordinates follow the OS 1:25,000 mean high water line.

Separate maps available for *O. edulis* and *M. mercenaria* at Langstone Harbour

Food Authority: Portsmouth Port Health Authority

Graphic 2-3 Classified *O. edulis* production areas in Langstone Harbour



Classification of Bivalve Mollusc Production Areas: Effective from 1 February 2024

The areas delineated above are those classified as bivalve mollusc production areas under Regulation (EU) 2019/627.

Further details on the classified species and the areas may be obtained from the responsible Food Authority. Enquiries regarding the maps should be directed to: Shellfish Microbiology, CEFAS Weymouth Laboratory, Barrack Road, The Nothe, Weymouth, Dorset DT4 8UB. (Tel: 01305 206600 Fax: 01305 206601)

N.B. Lat/Longs quoted are WGS84

Unless otherwise stated, non-straight line boundaries between co-ordinates follow the OS 1:25,000 mean high water line.

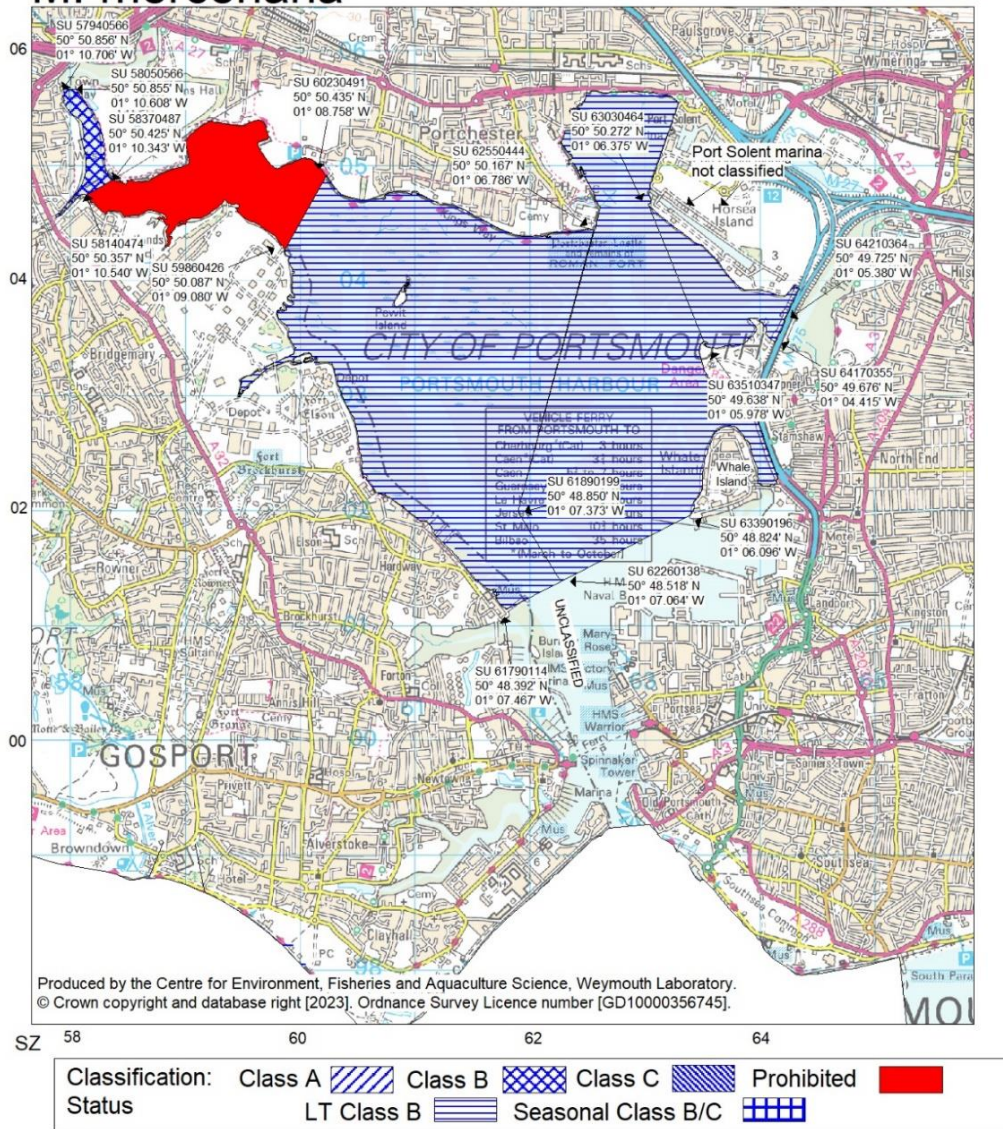
Separate maps available for *C. gigas* and *M. mercenaria* at Langstone Harbour

Food Authority: Portsmouth Port Health Authority

3 Portsmouth Harbour

Graphic 3-1 Classified *M. mercenaria* production areas in Portsmouth Harbour

Portsmouth Harbour - *M. mercenaria* Scale - 1:50000



Classification of Bivalve Mollusc Production Areas: Effective from 1 December 2023

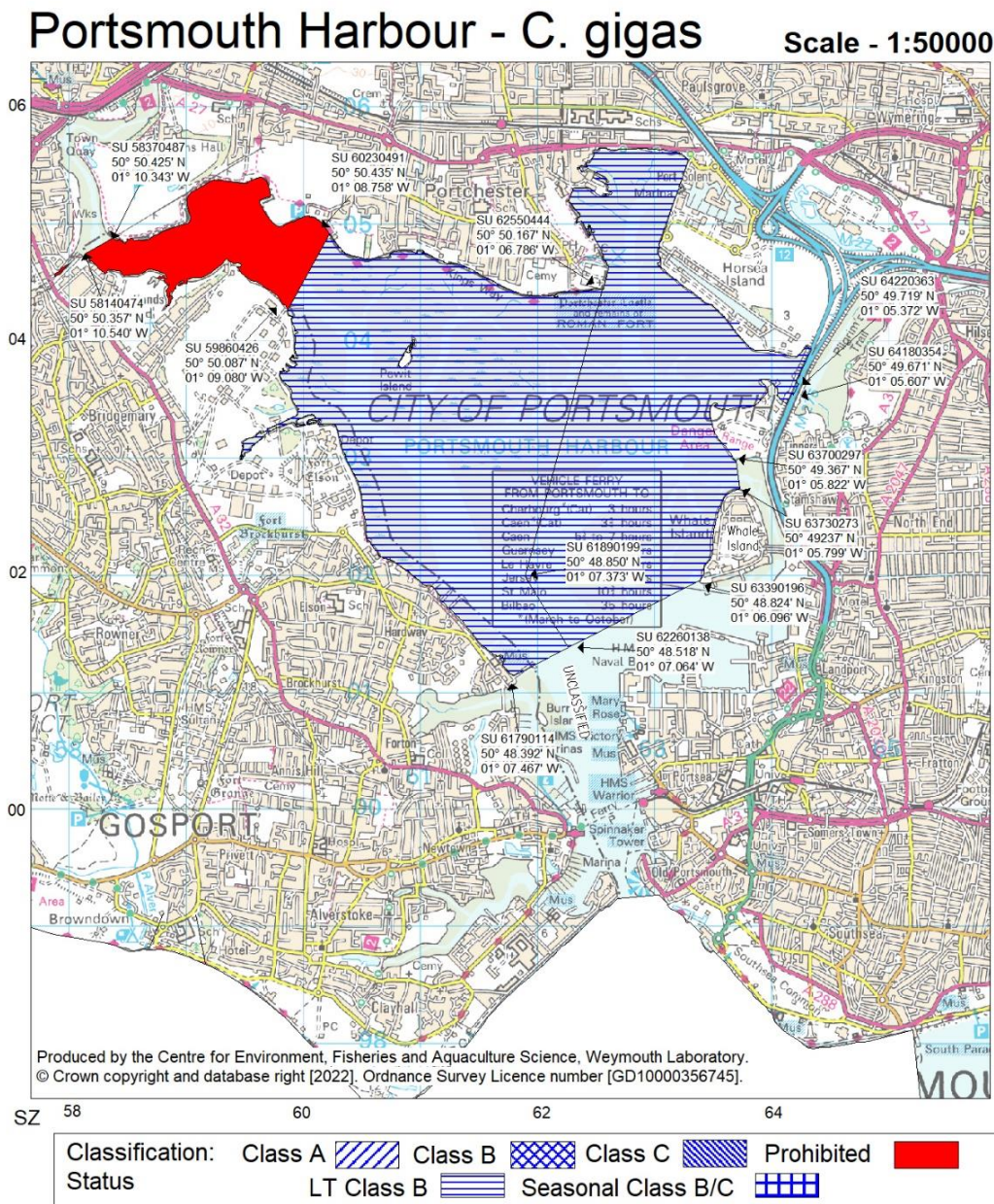
The areas delineated above are those classified as bivalve mollusc production areas under Regulation (EU) 2019/627.

Further details on the classified species and the areas may be obtained from the responsible Food Authority. Enquiries regarding the maps should be directed to: Shellfish Microbiology, CEFAS Weymouth Laboratory, Barrack Road, The Nothe, Weymouth, Dorset DT4 8UB. (Tel: 01305 206600 Fax: 01305 206601)

N.B. Lat/Longs quoted are WGS84
 Unless otherwise stated, non-straight line boundaries between co-ordinates follow the OS 1:25,000 mean high water line.

Food Authority: Portsmouth Port Health Authority

Graphic 3-2 Classified *Crassostrea gigas* production areas in Portsmouth Harbour



Classification of Bivalve Mollusc Production Areas: Effective from 1 September 2022

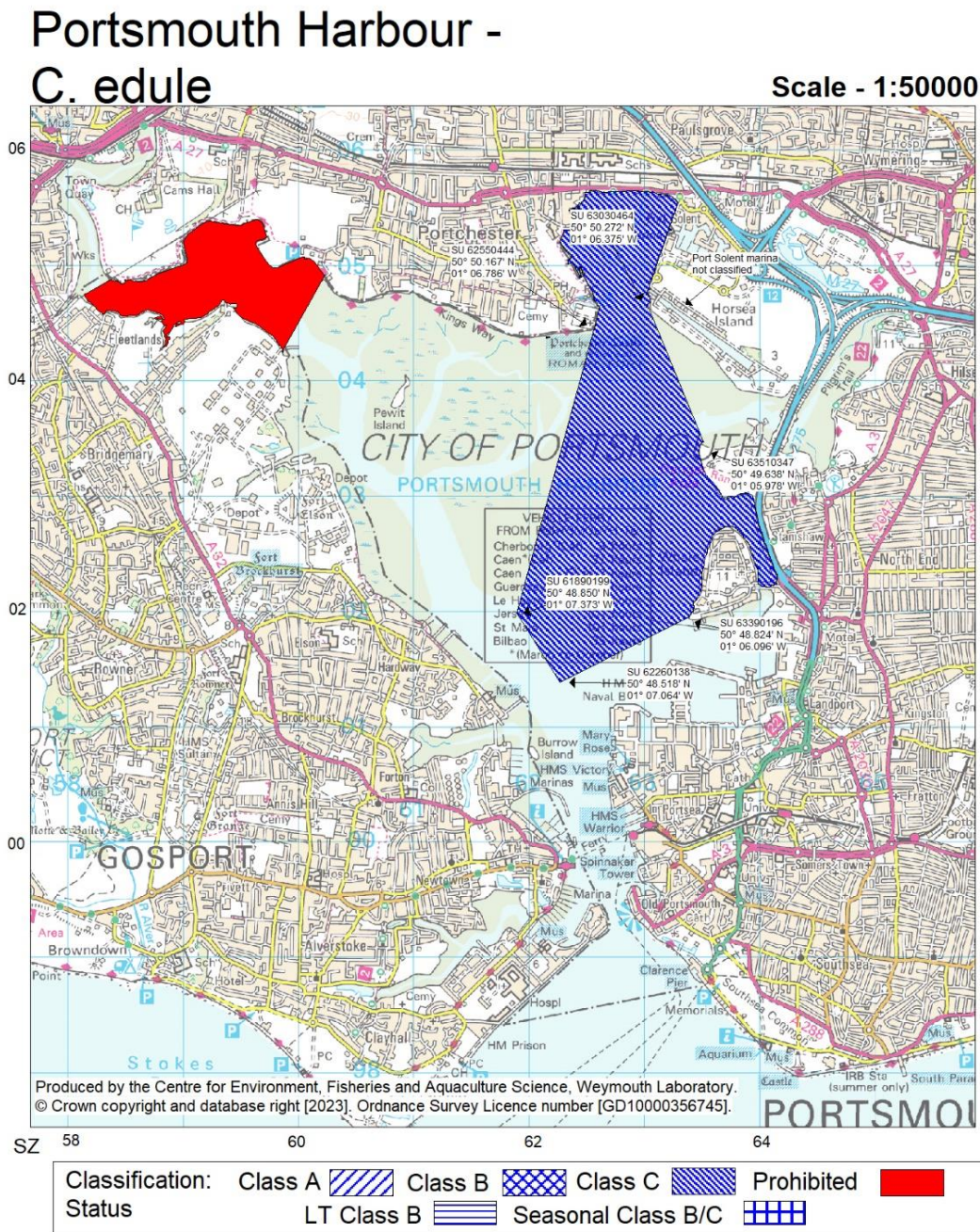
The areas delineated above are those classified as bivalve mollusc production areas under Regulation (EU) 2019/627.

Further details on the classified species and the areas may be obtained from the responsible Food Authority. Enquiries regarding the maps should be directed to: Shellfish Microbiology, CEFAS Weymouth Laboratory, Barrack Road, The Nothe, Weymouth, Dorset DT4 8UB. (Tel: 01305 206600 Fax: 01305 206601)

N.B. Lat/Longs quoted are WGS84
 Unless otherwise stated, non-straight line boundaries between co-ordinates follow the OS 1:25,000 mean high water line.

Food Authority: Portsmouth Port Health Authority

Graphic 3-3 Classified *Cerastoderma edule* production areas in Portsmouth Harbour



Classification of Bivalve Mollusc Production Areas: Effective from 1 December 2023

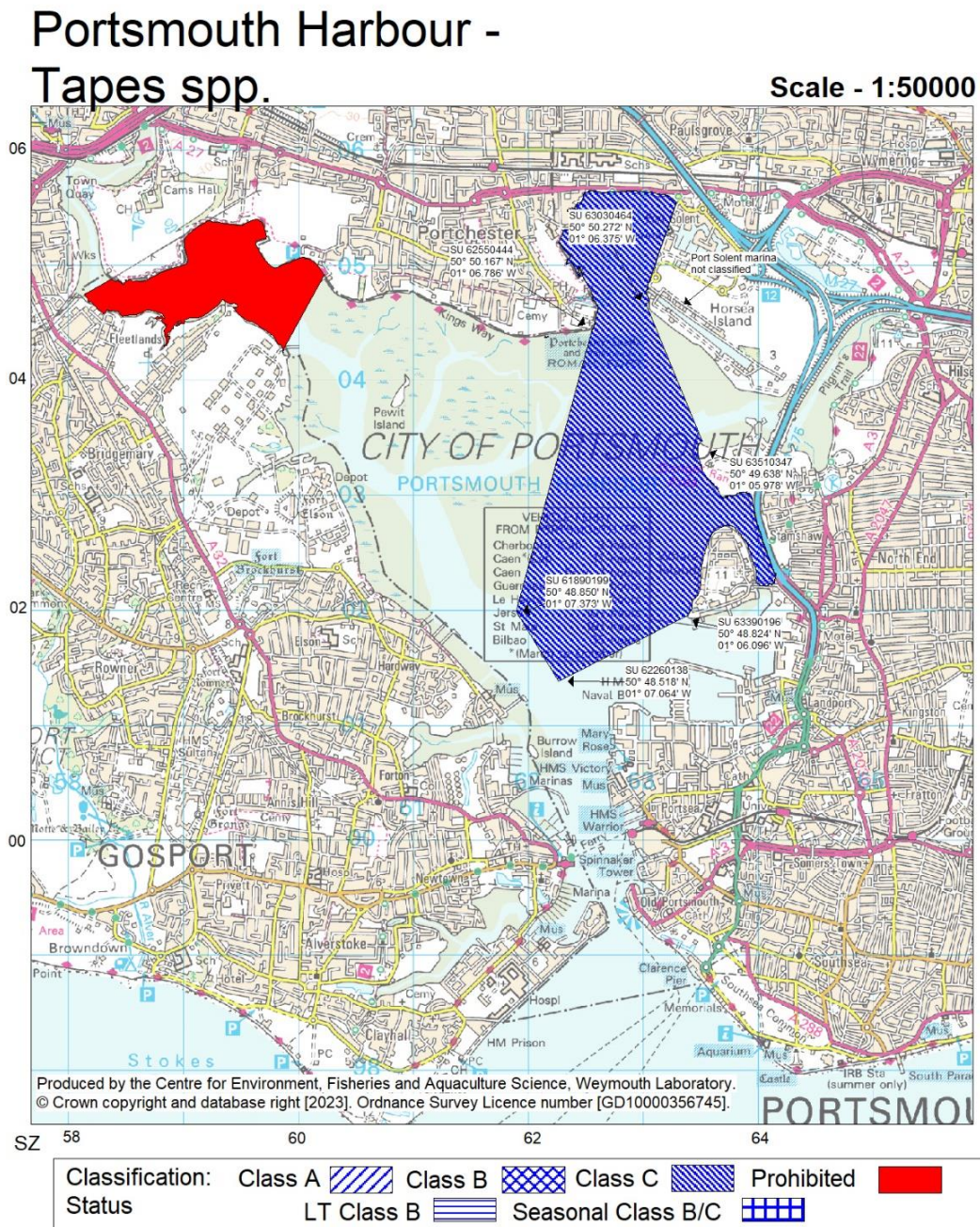
The areas delineated above are those classified as bivalve mollusc production areas under Regulation (EU) 2019/627.

Further details on the classified species and the areas may be obtained from the responsible Food Authority. Enquiries regarding the maps should be directed to: Shellfish Microbiology, CEFAS Weymouth Laboratory, Barrack Road, The Nothe, Weymouth, Dorset DT4 8UB. (Tel: 01305 206600 Fax: 01305 206601)

N.B. Lat/Longs quoted are WGS84
 Unless otherwise stated, non-straight line boundaries between co-ordinates follow the OS 1:25,000 mean high water line.
 Separate maps available for *Tapes* spp. and *M. mercenaria* at Portsmouth Harbour

Food Authority: Portsmouth Port Health Authority

Graphic 3-5 Classified *Tapes spp.* production areas in Portsmouth Harbour



Classification of Bivalve Mollusc Production Areas: Effective from 1 December 2023

The areas delineated above are those classified as bivalve mollusc production areas under Regulation (EU) 2019/627.

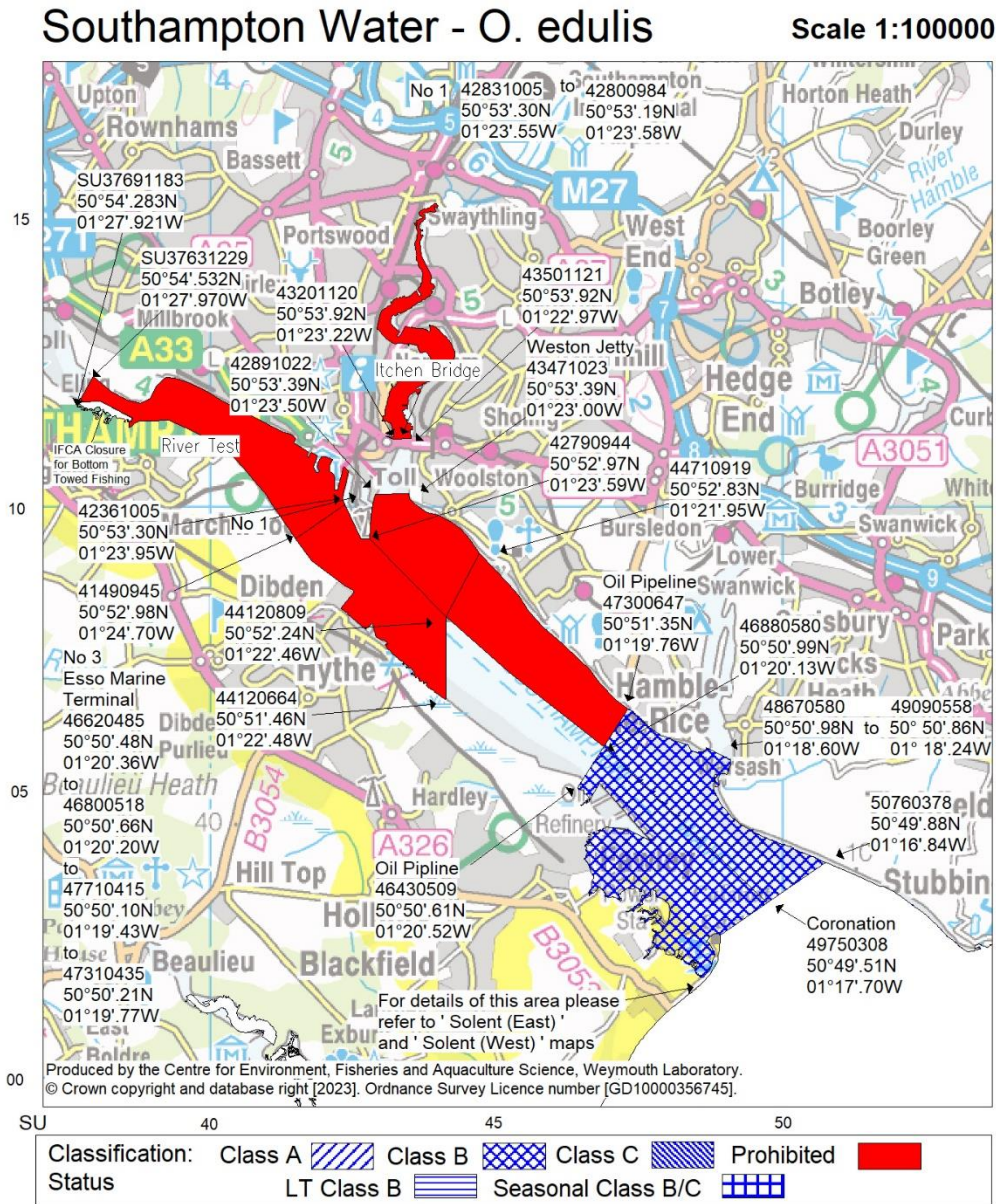
Further details on the classified species and the areas may be obtained from the responsible Food Authority. Enquiries regarding the maps should be directed to: Shellfish Microbiology, CEFAS Weymouth Laboratory, Barrack Road, The Nothe, Weymouth, Dorset DT4 8UB. (Tel: 01305 206600 Fax: 01305 206601)

N.B. Lat/Longs quoted are WGS84
 Unless otherwise stated, non-straight line boundaries between co-ordinates follow the OS 1:25,000 mean high water line.
 Separate maps available for *M. mercenaria* and *C. edule* at Portsmouth Harbour

Food Authority: Portsmouth Port Health Authority

4 Southampton Water

Graphic 4-1 Classified *O. edulis* production areas in Southampton Water



Classification of Bivalve Mollusc Production Areas: Effective from 1 December 2023

The areas delineated above are those classified as bivalve mollusc production areas under Regulation (EU) 2019/627.

Further details on the classified species and the areas may be obtained from the responsible Food Authority. Enquiries regarding the maps should be directed to: Shellfish Microbiology, CEFAS Weymouth Laboratory, Barrack Road, The Nothe, Weymouth, Dorset DT4 8UB. (Tel: 01305 206600)

N.B. No harvesting is permitted from Prohibited or unclassified areas
 i.e. areas that are not shaded to denote class A, B, LT B or C

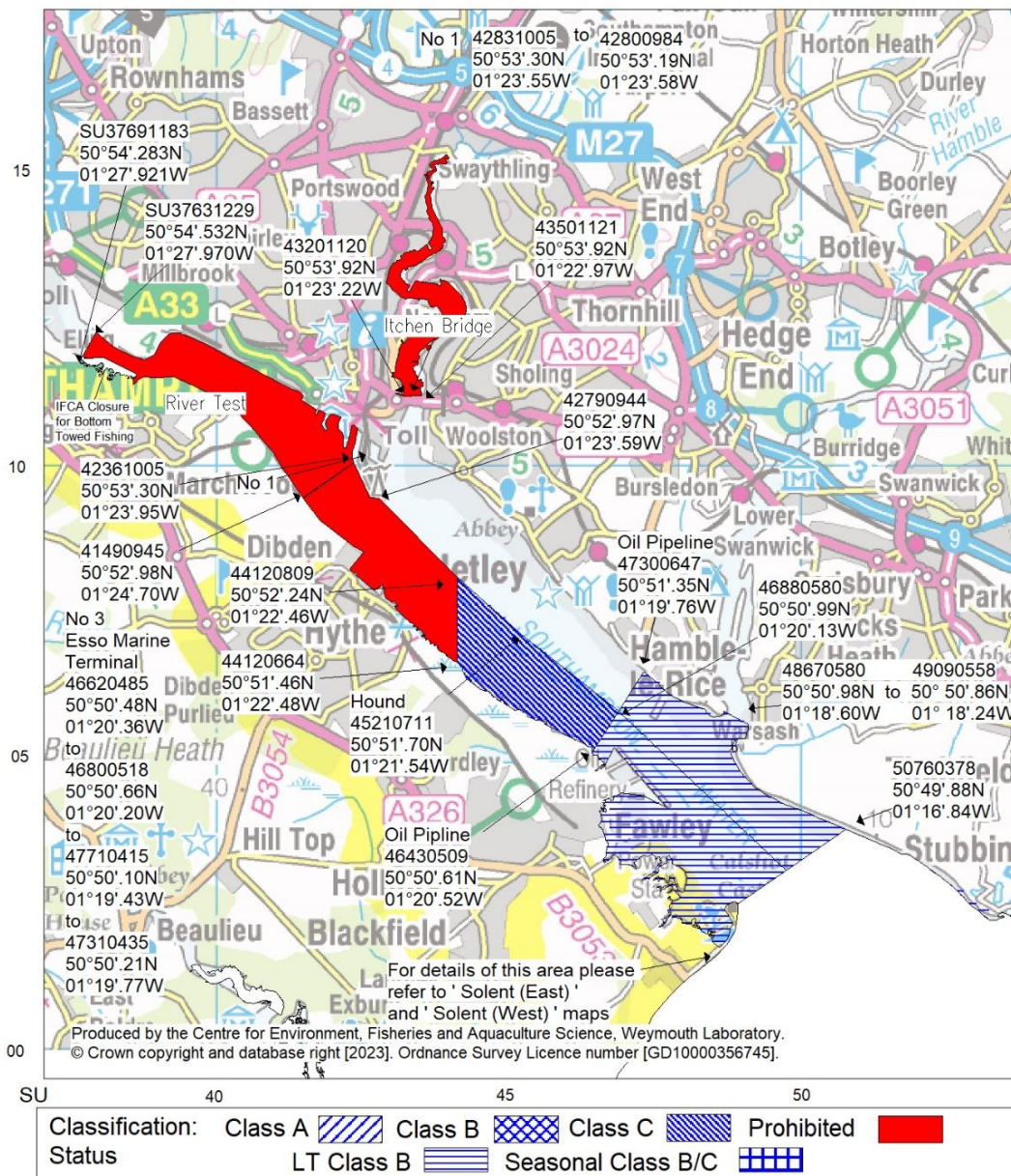
Lat/Longs quoted are WGS84

Unless otherwise stated, non-straight line boundaries between co-ordinates follow the OS 1:25,000 mean high water line.

Food Authority: Southampton Port Health Authority

Graphic 4-2 Classified *M. mercenaria* production areas in Southampton Water

Southampton Water - *M. mercenaria* scale 1:100000



Classification of Bivalve Mollusc Production Areas: Effective from 1 December 2023

The areas delineated above are those classified as bivalve mollusc production areas under Regulation (EU) 2019/627.

Further details on the classified species and the areas may be obtained from the responsible Food Authority. Enquiries regarding the maps should be directed to: Shellfish Microbiology, CEFAS Weymouth Laboratory, Barrack Road, The Nothe, Weymouth, Dorset DT4 8UB. (Tel: 01305 206600 Fax: 01305 206601)

N.B. No harvesting is permitted from Prohibited or unclassified areas

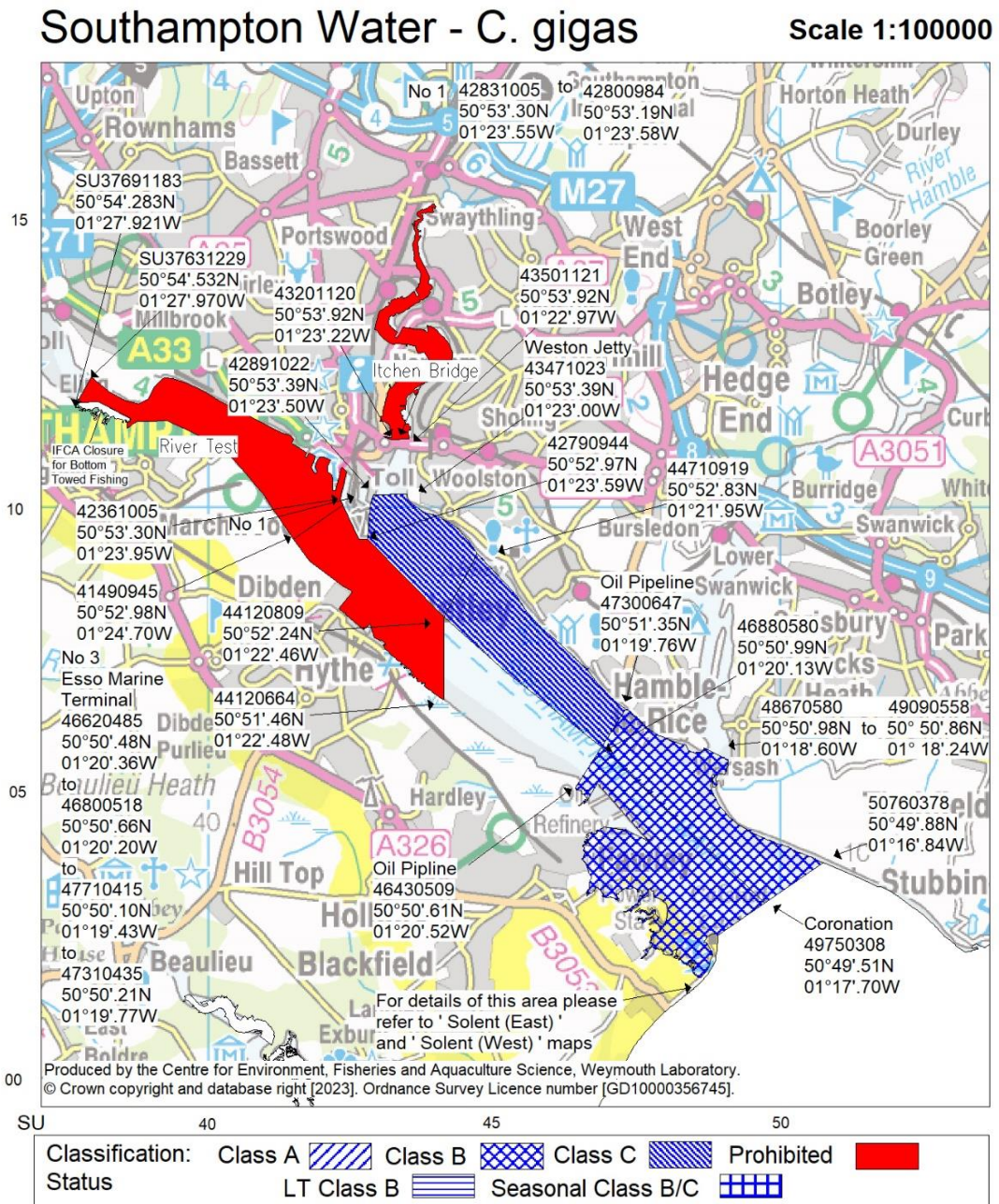
i.e. areas that are not shaded to denote class A, B, LT B or C

Lat/Longs quoted are WGS84

Unless otherwise stated, non-straight line boundaries between co-ordinates follow the OS 1:25,000 mean high water line.

Food Authority: Southampton Port Health Authority

Graphic 4-3 Classified *Crassostrea gigas* production areas in Southampton Water



Classification of Bivalve Mollusc Production Areas: Effective from 1 December 2023

The areas delineated above are those classified as bivalve mollusc production areas under Regulation (EU) 2019/627.

Further details on the classified species and the areas may be obtained from the responsible Food Authority. Enquiries regarding the maps should be directed to: Shellfish Microbiology, CEFAS Weymouth Laboratory, Barrack Road, The Nothe, Weymouth, Dorset DT4 8UB. (Tel: 01305 206600 Fax: 01305 206601)

N.B. No harvesting is permitted from Prohibited or unclassified areas i.e. areas that are not shaded to denote class A, B, LT B or C

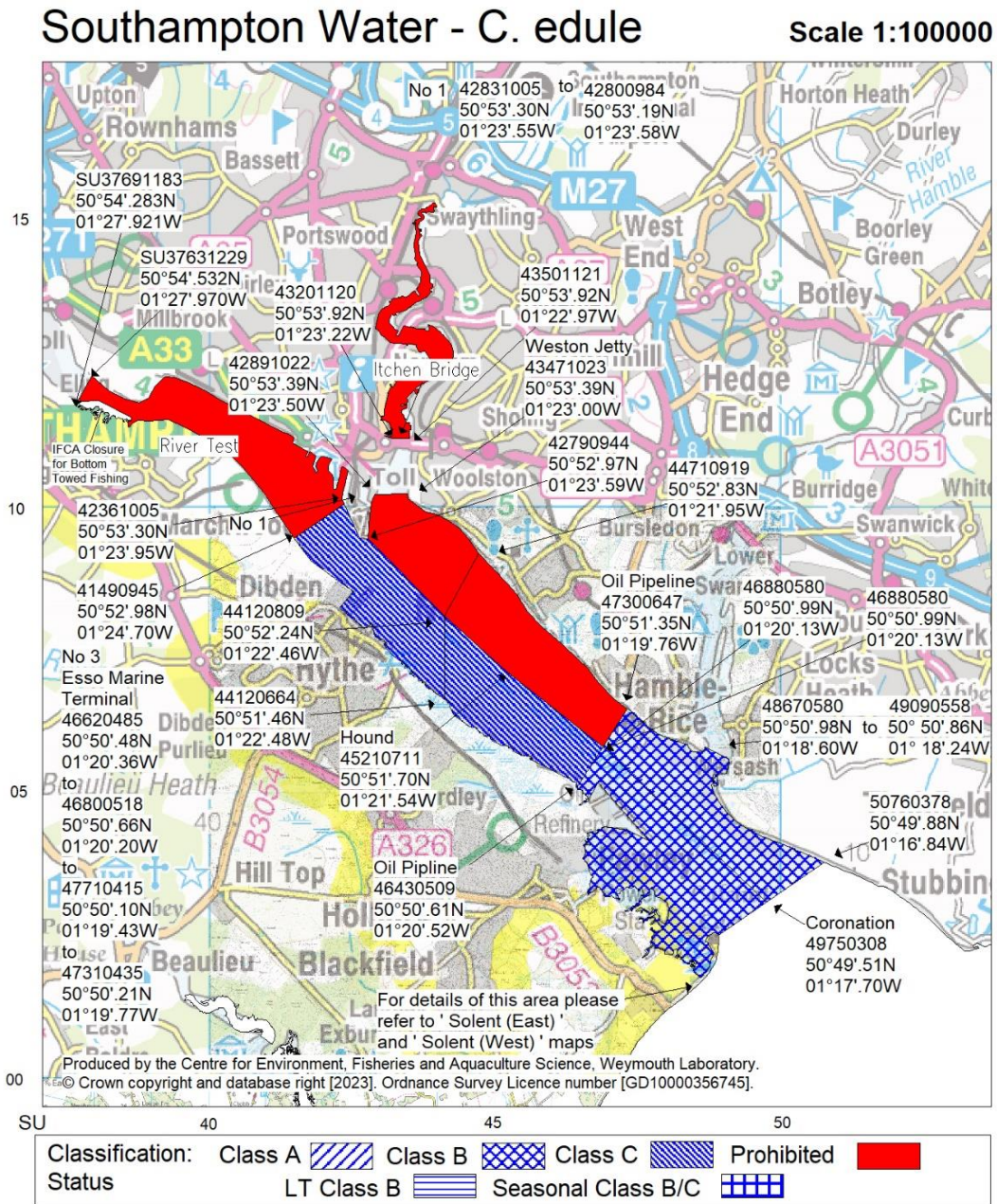
Lat/Longs quoted are WGS84

Unless otherwise stated, non-straight line boundaries between co-ordinates follow the OS 1:25,000 mean high water line.

Separate map available for *O. edulis*, *M. mercenaria* & *Tapes* spp. at Southampton Water

Food Authority: Southampton Port Health Authority

Graphic 4-4 Classified *Cerastoderma edule* production areas in Southampton Water



Classification of Bivalve Mollusc Production Areas: Effective from 5 October 2023

The areas delineated above are those classified as bivalve mollusc production areas under Regulation (EU) 2019/627.

Further details on the classified species and the areas may be obtained from the responsible Food Authority. Enquiries regarding the maps should be directed to: Shellfish Microbiology, CEFAS Weymouth Laboratory, Barrack Road, The Nothe, Weymouth, Dorset DT4 8UB. (Tel: 01305 206600 Fax: 01305 206601)

N.B. No harvesting is permitted from Prohibited or unclassified areas i.e. areas that are not shaded to denote class A, B, LT B or C

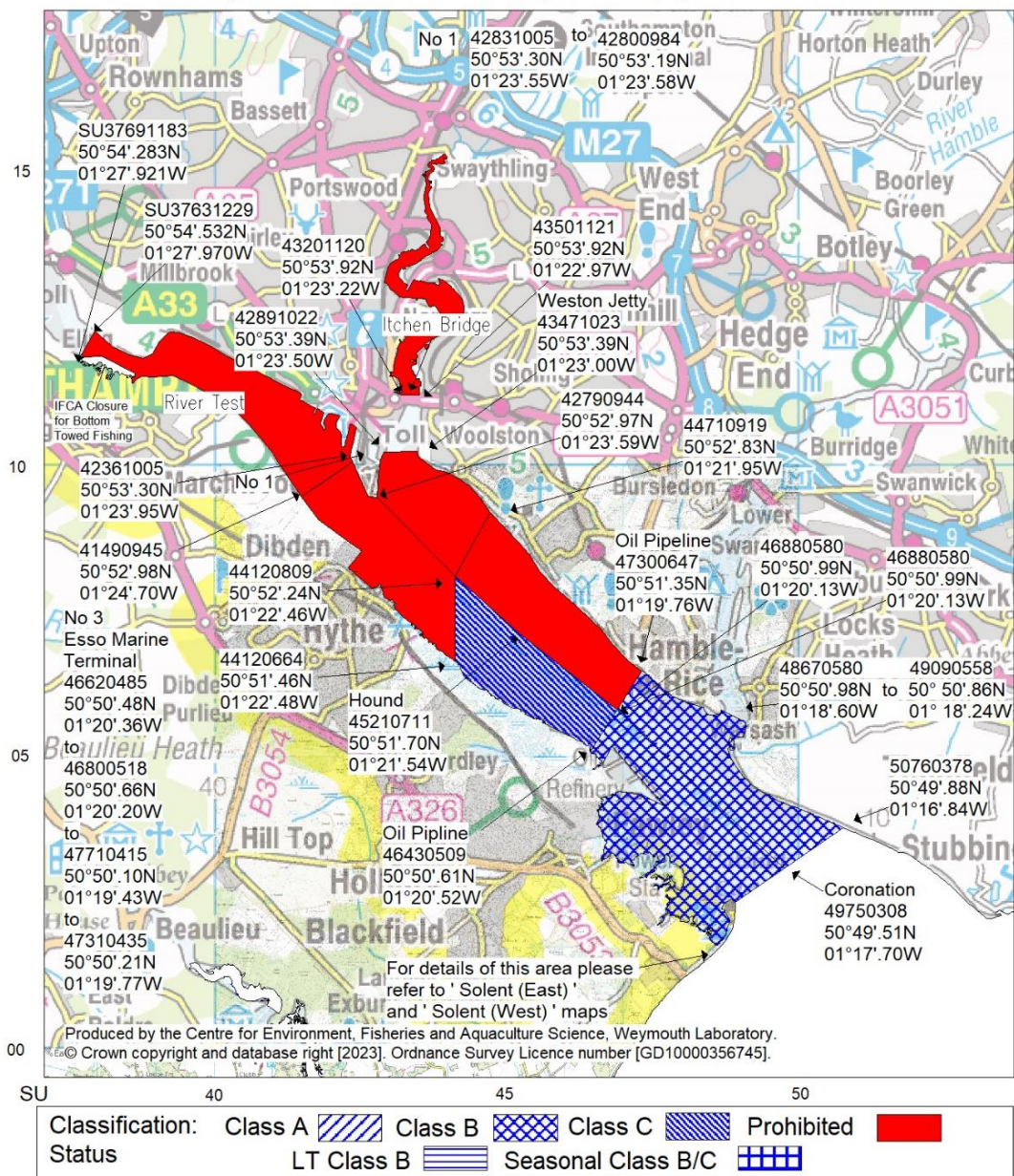
Lat/Longs quoted are WGS84

Unless otherwise stated, non-straight line boundaries between co-ordinates follow the OS 1:25,000 mean high water line.

Food Authority: Southampton Port Health Authority

Graphic 4-5 Classified *Tapes spp.* production areas in Southampton Water

Southampton Water - *Tapes spp.* Scale 1:100000



Classification of Bivalve Mollusc Production Areas: Effective from 1 December 2023

The areas delineated above are those classified as bivalve mollusc production areas under Regulation (EU) 2019/627.

Further details on the classified species and the areas may be obtained from the responsible Food Authority. Enquiries regarding the maps should be directed to: Shellfish Microbiology, CEFAS Weymouth Laboratory, Barrack Road, The Nothe, Weymouth, Dorset DT4 8UB. (Tel: 01305 206600 Fax: 01305 206601)

N.B. No harvesting is permitted from Prohibited or unclassified areas i.e. areas that are not shaded to denote class A, B, LT B or C
 Lat/Longs quoted are WGS84
 Unless otherwise stated, non-straight line boundaries between co-ordinates follow the OS 1:25,000 mean high water line.

Food Authority: Southampton Port Health Authority

References

- [1] Centre for Environment, Fisheries and Aquaculture Science, “Shellfish classification and microbiological monitoring – England and Wales: Classification zone maps,” No date. [Online]. Available: <https://www.cefasc.co.uk/data-and-publications/shellfish-classification-and-microbiological-monitoring/england-and-wales/classification-zone-maps/>. [Accessed 12 May 2025].
- [2] Food Standards Agency, “Shellfish classification,” 24 January 2018. [Online]. Available: <https://www.food.gov.uk/business-guidance/shellfish-classification>. [Accessed 12 May 2025].
- [3] Food Standards Agency, “FSA Current classification list and sampling plans,” No date. [Online]. Available: <https://www.food.gov.uk/sites/default/files/media/document/Classification%20list%20and%20sampling%20plans%20-%202019%20January.xlsx>. [Accessed 12 May 2025].



from
Southern
Water. 

The logo graphic for Southern Water, featuring three stylized white waves of varying lengths, with the longest wave on the right.